

Wren ★ Feathers

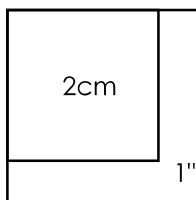
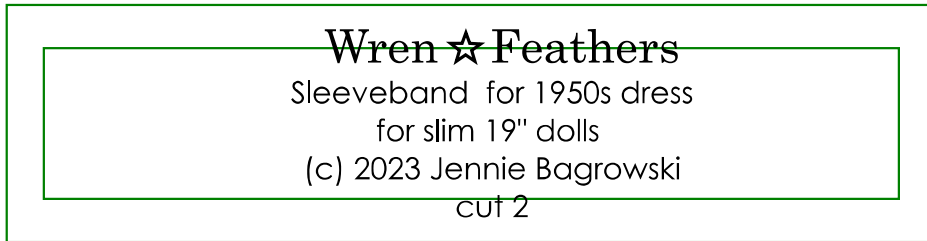
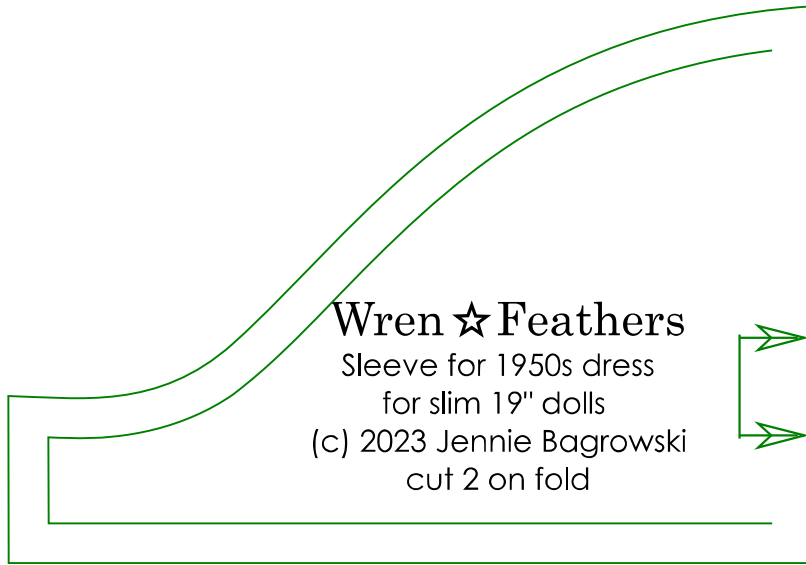
Penelope's Basic 1950s Dress



Doll is a 19" Tonner/Fabric by Lori Holt

Dress will fit dolls with similar size
such as 18" Ann Estelle or 19" Götz Happy Kidz

Bodice is here: <https://jenwrenne.wordpress.com/2023/08/24/penelopes-latest-find/>



Quarter inch seams allowed on all pieces

As always this pattern is © by me (Jennie Bagrowski) and is for your personal use only, you MAY share it by linking to this blog, you may NOT sell it or upload it to any site without my permission. If you sell things made from this pattern I'd appreciate credit for the pattern design. If you downloaded this elsewhere it was stolen from: <http://jenwrenne.wordpress.com> You use this tutorial at your own risk. I assume you have basic sewing knowledge and the explanation should suffice, but if you need help please email me!
Quarter inch seams allowed unless otherwise specified.