

# Wren ★ Feathers

## Smocking an insert

As always, this pattern is © by me (Jennie Bagrowski) and is for your personal use only, you MAY share it by linking to this blog, you may NOT sell it or upload it to any site without my permission. If you sell things made from this pattern I'd appreciate credit for the pattern design. ☺

If you downloaded this elsewhere it was stolen from: <http://jenwrenne.wordpress.com>

I assume you have basic sewing knowledge and the explanation should suffice, but if you need help please email me!

A while back, Brenda sent me this adorable pic:

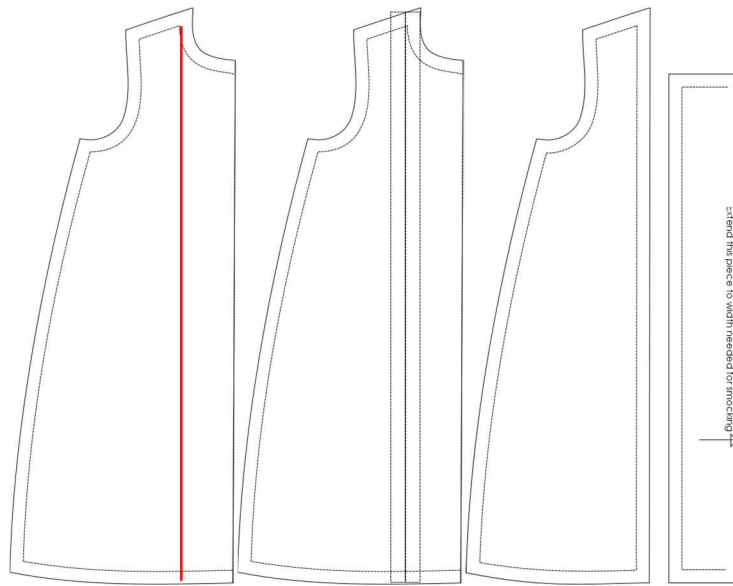


She used the machine smocking designs from [this collection](#). If you don't have an embroidery machine, you can use these guidelines to smock by hand if you know how, or there are mock-smocking directions in [this pattern](#) which, incidentally, will also provide you with a sloper to use for drafting your own version for whatever size doll you'd like!

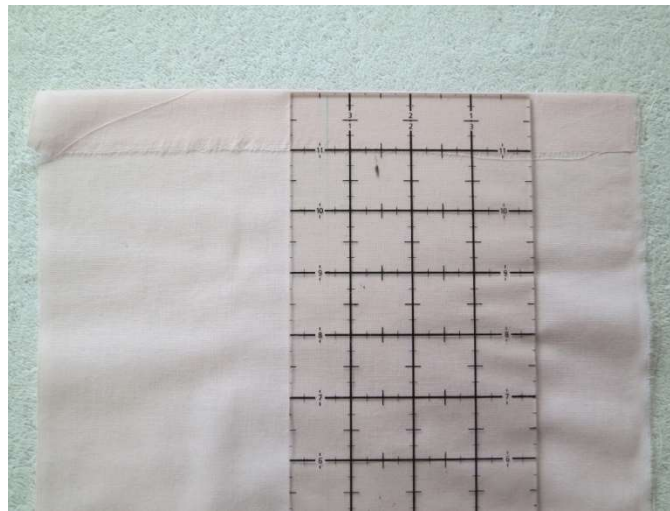


Brenda's version uses a smocked panel inserted into the bodice with a separate skirt. The wave pattern makes a delicate little ruffle at the top that matches perfectly with the ruffled sleeves. As an alternative, with a row of straight stitches at the top and straight sleeves, it has a more "mature" feel suited to an older doll (maybe an AG/AGAT or other "tweenager")

## Adapting your pattern:



Slice a line down from the shoulder, separate the pieces and add seam allowances. Extend the center piece to the size required for your smocking (usually about 3x the original width). You can use any well-fitting standard bodice/gathered skirt pattern as Brenda did, or an A-line dress like the Lilo pattern [free here](https://jenwrenne.wordpress.com/2018/07/05/a-new-dress-for-lilo/) - <https://jenwrenne.wordpress.com/2018/07/05/a-new-dress-for-lilo/> as the base.



If you are doing your smocking pleating by hand, you can hem the top of the smocked rectangle first for more of a ruffled look on top. If you're using a smocking pleater, fold a deep hem at the top and pink the raw edges if desired, then run it through the pleater, gather up the pleats and tie off. In either case, make sure the piece is a little longer than needed so you have room for adjustment.



For machine smocking, it's a little more critical than usual to line up the top edge perfectly. Load the design, have your machine mark the top points, then measure  $\frac{1}{4}$ " above that and affix your fabric to the stabilizer as described in the pattern here <https://www.etsy.com/listing/196456657/classic-smocked-dress-set-for-14-16-18>



Drape the front pieces on the doll to see how low you want the neckline and pin in place. Sew shoulder seams first, then serge the back edges, neckline and side seams. Trim off excess from the bottom of the smocked piece as needed.

I hemmed the neck by hand, but you could also topstitch the whole way down from the neck to the bottom edge, as Brenda did. Construct the rest of the dress as usual.