

# Kimono (Yuukata), Obi and Geta pattern

**Kidz n Cats**  
**Chest: 8.5"**  
**Waist: 8"**  
**Head: 10-10.5"** (this may vary a little based on head mold,

**Trendon Sasha:**  
**Chest: 8.75"**  
**Waist: 8.25"**  
**Head: 10"**

**Magic Attic/Carpatina,**  
**Chest: just under 9.5"**  
**Waist: 8.75"**  
**Head: 11"** (this may vary a little based on head mold)

## Notes:

- Seam allowances are ¼" unless otherwise specified.
- **Print the patterns with no scaling. There is a mark on each page showing an inch. Match that to a ruler and make sure it's correct.**
- Patterns are designed to close flush in the back, so appropriate closures would be Velcro, buttons with loops or hooks and eyes.
- Check my blog for **free patterns here:** <http://jenwrenne.wordpress.com>
- This pattern is copyrighted by me and may not be shared or sold. If you sell things made from this pattern I would appreciate credit for the pattern design.
- Technically this is a yuukata – an unlined, informal cotton garment. I'll refer to it as a kimono, since that's the word associated with it in the West, but if you want to see the difference, go here: [http://www.immortageisha.com/ig\\_bb/viewtopic.php?f=60&t=15705](http://www.immortageisha.com/ig_bb/viewtopic.php?f=60&t=15705)
- If your boys want to dress up too, <http://jenwrenne.wordpress.com/2012/08/05/doll-hakama-pattern/>





Line up sleeves and main pieces and snip at the stars (where you see the knives pointing).





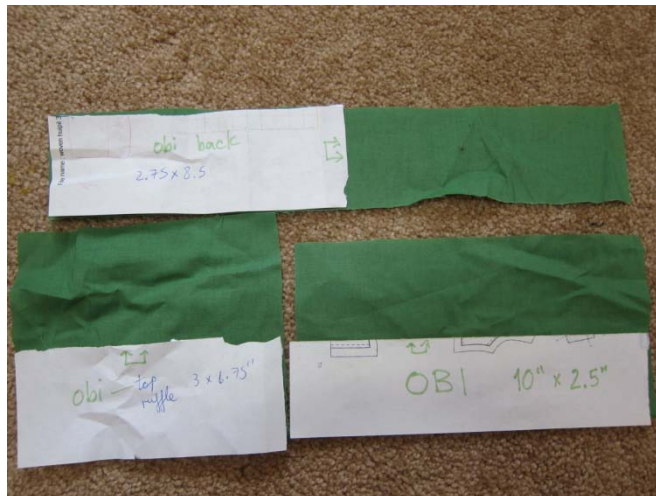


It is not too long! Traditionally Kimonos are made one sized and tucked up at the waist to fit the wearer. This adds ease when walking or moving around. You can either tie a cord around the doll's waist and blouse it up before putting on the obi, or run a basting stitch where you see the pins for a more permanent tuck. See next photos...

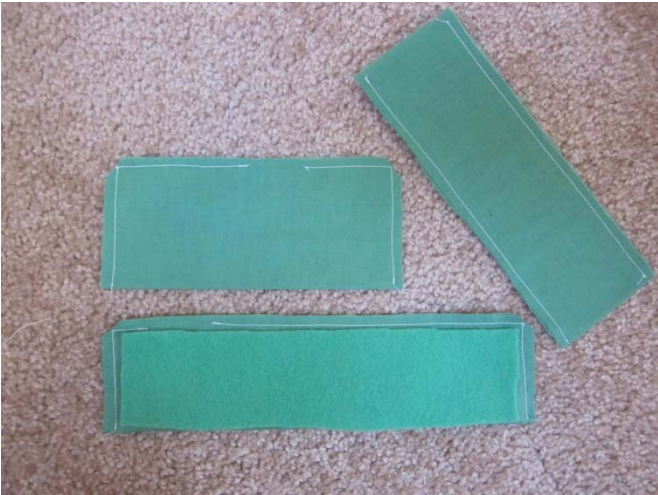




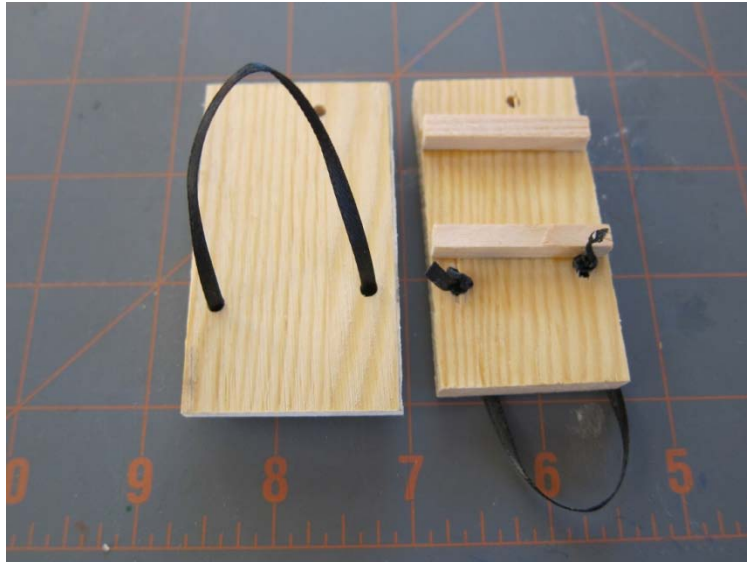
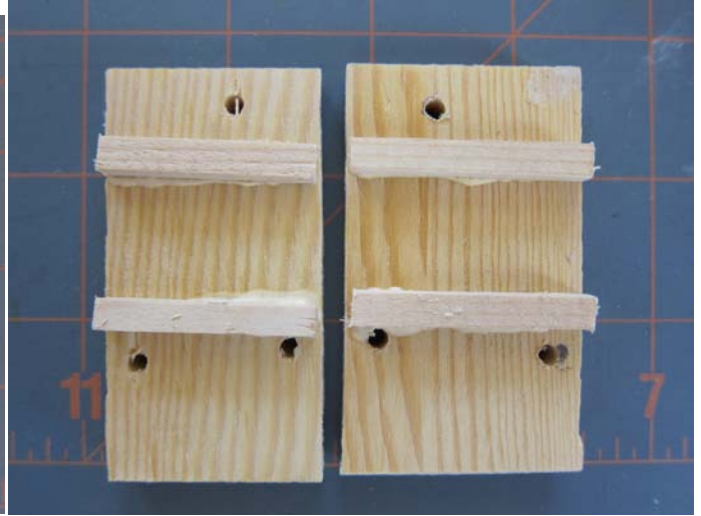
## Making the Obi



**Note:** depending on your doll's waist size, how much you pad your obi, or how thick your kimono fabric folds up to be, you may need to increase obi length up to 12" instead of 10"! Pieces can be padded with fleece, thin quilt batting or interfacing. Also note that folds are not marked on the pattern pieces – see photos for how to cut/where to place folds



# Making Geta







Obi  
cut 1 on fold



10"x2.5"

obi back  
cut 1

2.75"x8.5"

top ruffle  
cut 1

3"x6.75"

Kimono/Yuukata  
for 16"-18" slim dolls  
(c) 2013 Jennie Bagrowski  
sleeve cut 2 on fold



Kimono/Yuukata  
for 16"-18" slim dolls  
(c) 2013 Jennie Bagrowski  
Body cut 2



Extend straight lines 13" down from  
the stars to make a full-size pattern.

Collar is a rectangle cut on straight  
grain 36" x 2.25"