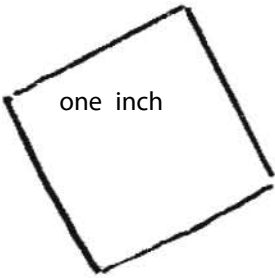




1/4" seams are allowed on all pieces
The square on each piece should
measure one inch

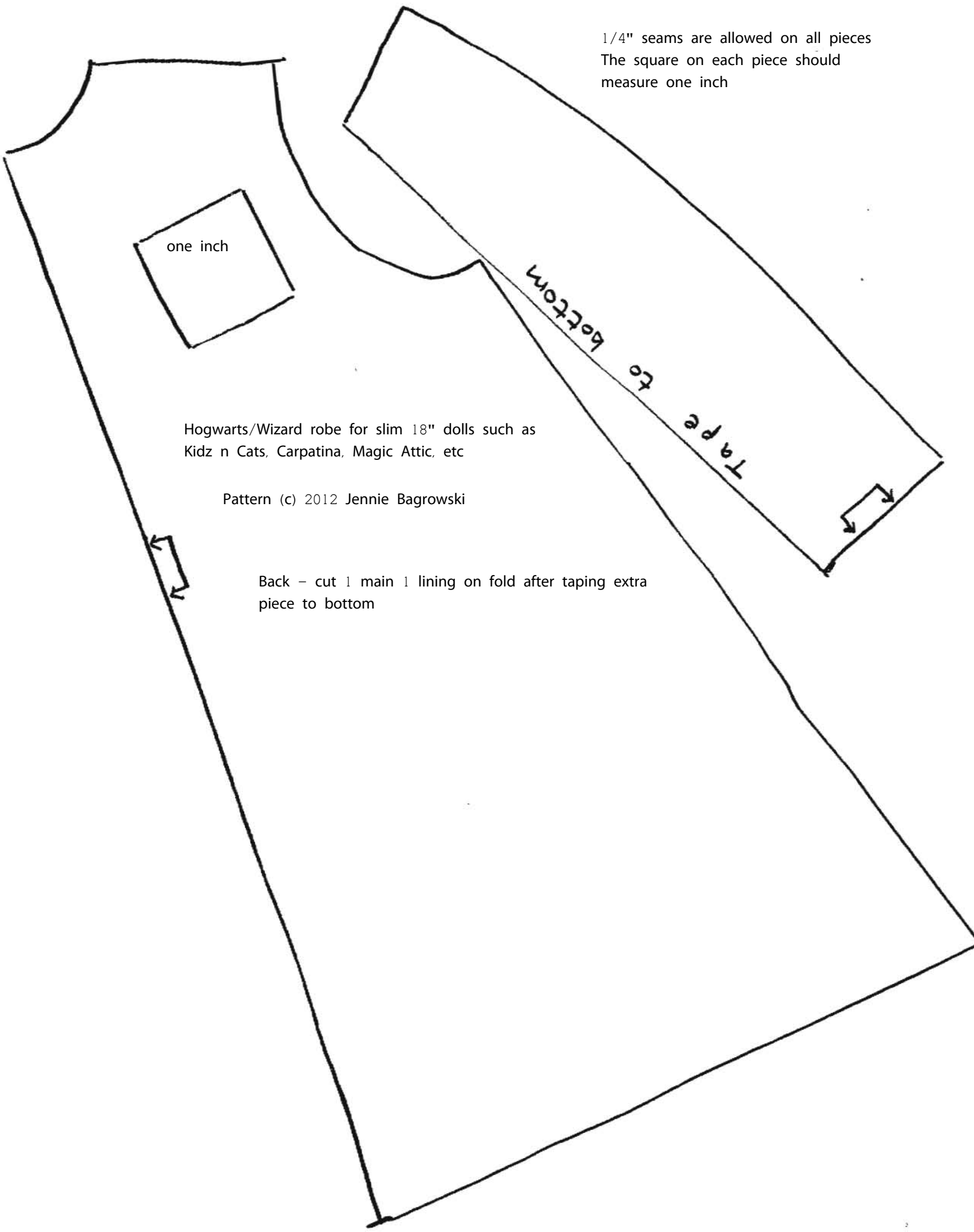


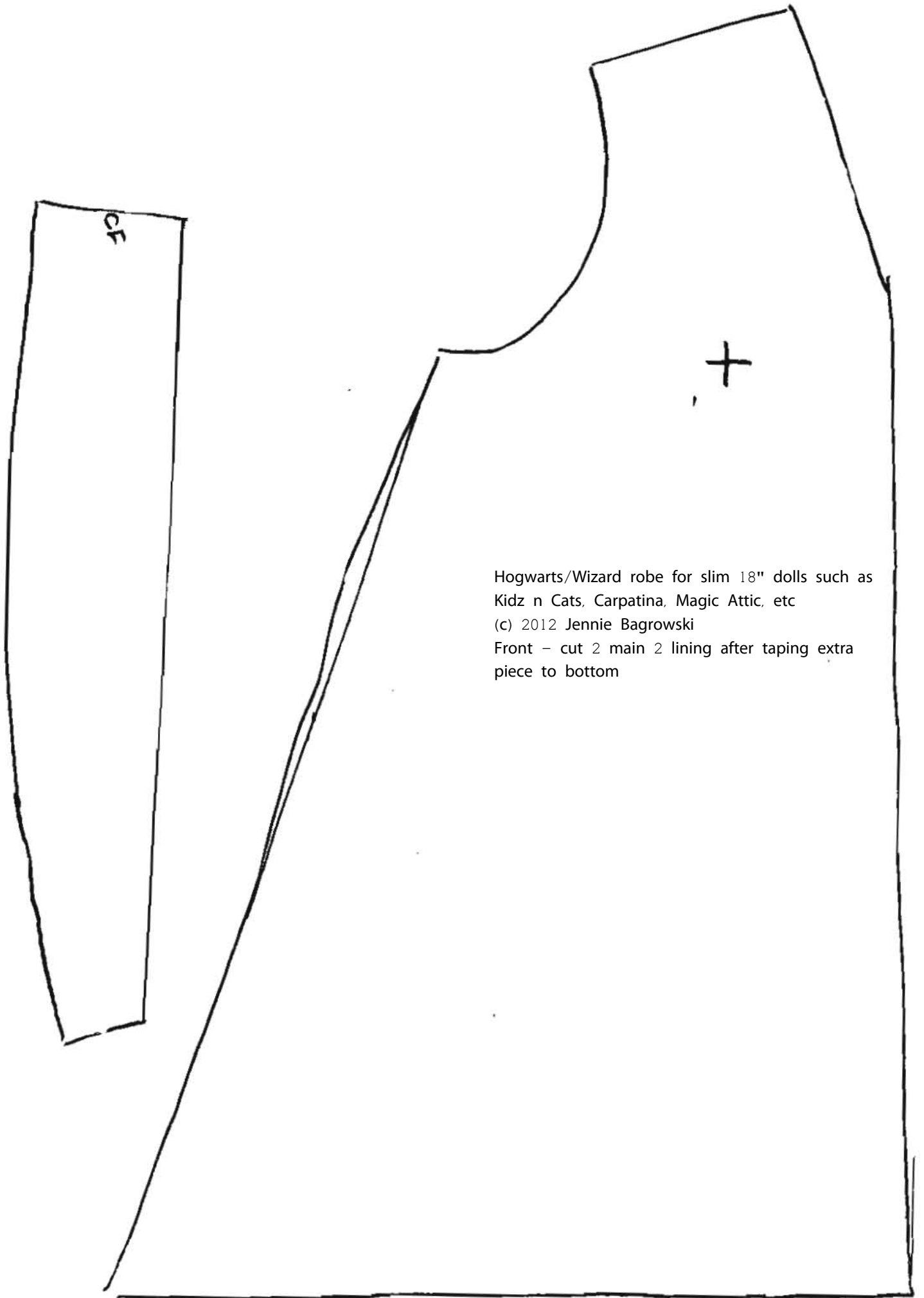
Hogwarts/Wizard robe for slim 18" dolls such as
Kidz n Cats, Carpatina, Magic Attic, etc

Pattern (c) 2012 Jennie Bagrowski

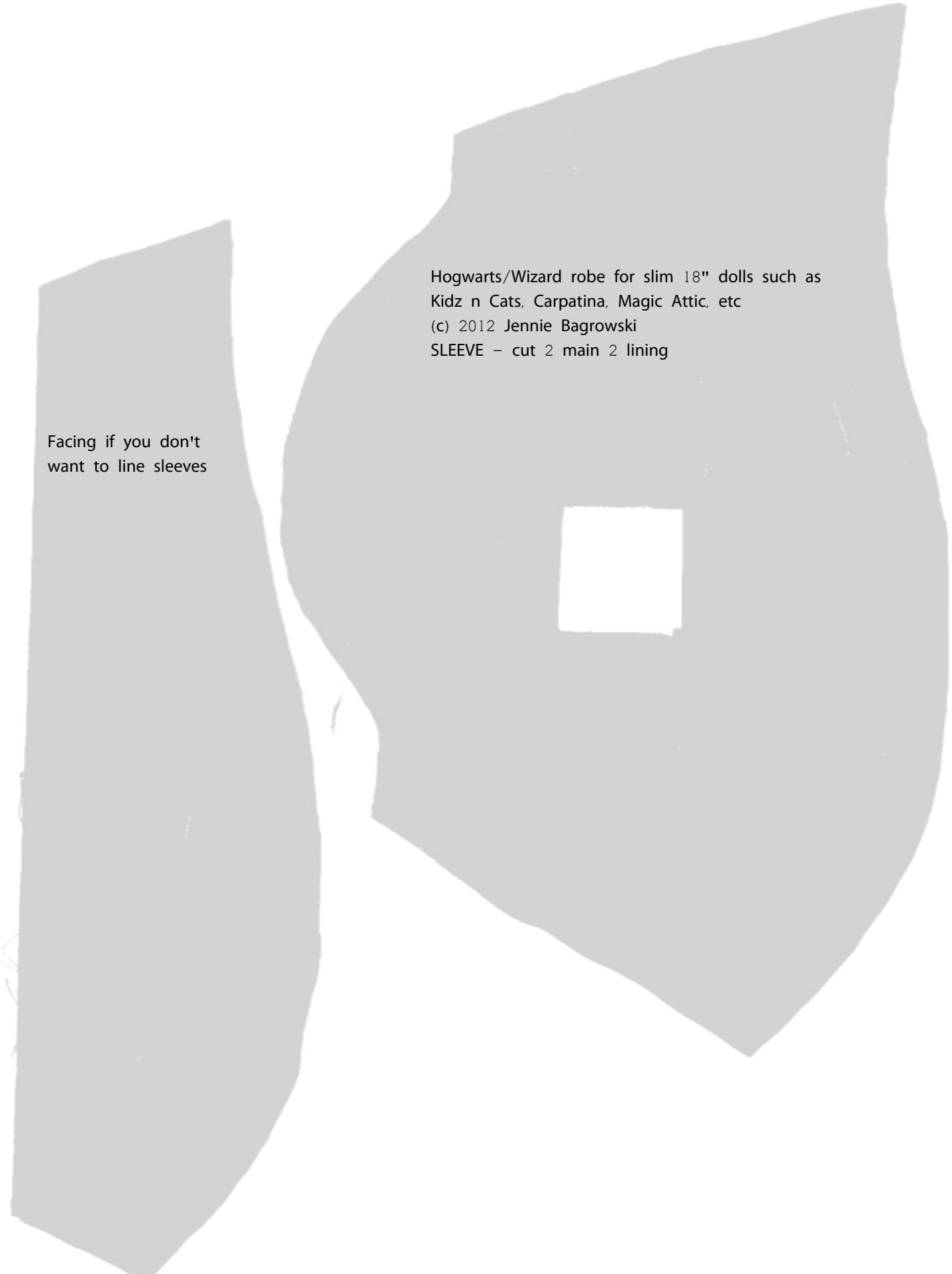
Back - cut 1 main 1 lining on fold after taping extra
piece to bottom

Tape to bottom



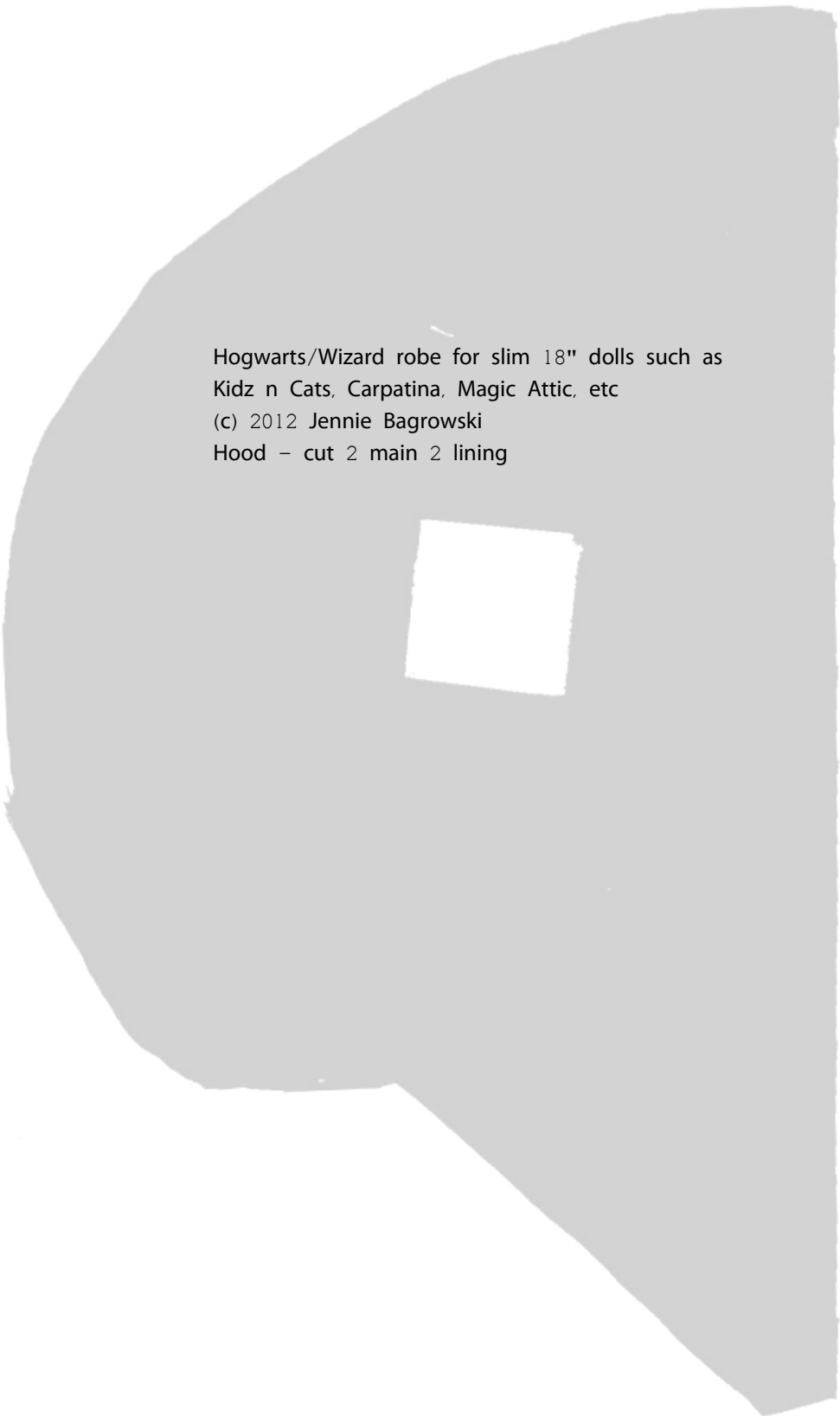


Hogwarts/Wizard robe for slim 18" dolls such as
Kidz n Cats, Carpatina, Magic Attic, etc
(c) 2012 Jennie Bagrowski
Front - cut 2 main 2 lining after taping extra
piece to bottom



Hogwarts/Wizard robe for slim 18" dolls such as
Kidz n Cats, Carpatina, Magic Attic, etc
(c) 2012 Jennie Bagrowski
SLEEVE – cut 2 main 2 lining

Facing if you don't
want to line sleeves



Hogwarts/Wizard robe for slim 18" dolls such as
Kidz n Cats, Carpatina, Magic Attic, etc

(c) 2012 Jennie Bagrowski

Hood – cut 2 main 2 lining